



MARINE CATALOGUE

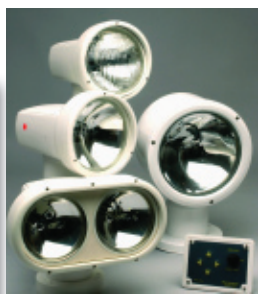
A leader in innovation and manufacturing since 1976



PLEASURE BOAT IS OUR PASSION



Ocean technologies is a range of products launched by Matromarine products, an international manufacturing Company developping and realizing a wide choice of products for marine use. Marketing and distribution is handled via multiple sales Companies and independent Distributors worldwide. 39 years of experience providing solutions for marine equipment need to ensure a high quality standard. We are certified ISO 9001. Today Matromarine is producing not only toilets and pumps, but can boast of a range of over 100 articles for pleasure crafts, many of which are bearing the mark and the approval of R.I.N.A., according to Solas rules.



CONTENTS:

Marine toilets	3
Wastewater handling	7
Marine pumps	9
Horns, switches and trims...	12
Marine lights	13
Ventilations.....	14

Since high quality has always been the trademark of the range of products we manufacture, the best care to quality has always been the ground of our work.



marked according to the following Standards:

EN 55014 Radio disturbance

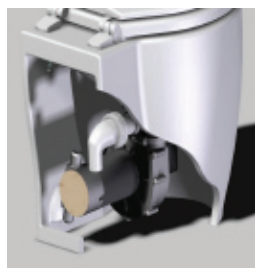
ISO 8846 Protection against Ignition of surrounding flammable gases

IMPORTANT:

We are manufacturers of all articles shown in the catalogue. Upon request we can supply electric motors and equipments at low tension. Matromarine reserves at any time the right to alter technical specifications, etc. without prior notice



Marine Toilets:



Matromarine has realized a range of toilets where performance, reliability, noise level and design have really reached the highest standards.

Available in 4 different basic models: electric standard, electric silence powered or manual. Competitively, the fine finish and well thought design of these toilets is remarkable. Made from white vitreous porcelain, and with corrosion resistant parts throughout, the Laguna toilets is quiet, robust and easy to clean.

MANUAL: This toilet may be supplied in the standard and large bowl versions and is equipped with a new conceiving of manual toilet pump offering the following qualities: thanks to the proper, buttonhole-shaped fixing holes on the base it is possible to replace the toilet without having to bore new holes (easy substitution with toilet Jabsco, RM, and many others) the toilet may be mounted both above and below the waterline; the fitted pump is a self priming one; the reversible left-handed pump mounting enables to install the toilet indifferently on both sides; waste discharge is possible both overboard and into a holding tank on board;

FITTING DETAILS: connections for 19 mm. (3/4") inlet hose and 38 mm. (1 1/2") outlet hose **WEIGHT:** 10 Kgs.

ELECTRIC STANDARD: A special white vitreous china bowl allows a perfect cleaning and an internal space as a normal WC, with usual external dimensions of marine toilets. All metal parts and screws are in stainless steel. The base is in anti-crash material and the body pump is in brass. It can be installed either above or below the sea level. A special macerator pump allows the expulsion up to 3.50 m in height. Self priming up to 1,2 mt. vertically. Equipped with cover and control panel. Connecting rod for outlet 1" 1/2.

ELECTRIC SILENT (hydrovacuum): The new line of fitted design bowls in vitreous china makes this toilet very comfortable and nice to be seen, just like a home toilet. The base is in anti-crash material. It can be installed either above or below the sea level. Matromarine has realized a range of toilets where performance, reliability, noise level and design have really reached the highest standards. The running cycle is completely automatic and eliminates wastewater through a high-performance pump that allows drainage of waste up to 7 m. in height and at a distance of 70 m. This hydrovacuum toilet can use an automatic water system or a flush pump installed onboard for water inlet. It is fitted with an electronic switch to regulate automatically water inlet and outlet at 2 different stages: first the bowl is filled up with clear water, and then waste is discharged by leaving the bowl empty and clean. Equipped with digital control panel and wooden seat with stainless steel hinges

Deluxe toilet can be installed indifferently with a centralized system or with a single system. Deluxe can also operate as a bidet: in fact, it is possible to supply it equipped with an optional bidet fitting. The water consumption is very low (about 1 – 2,5l) Equipped with a control panel and wooden seat with stainless steel hinges. Flush pump or electrovalve to be ordered apart. Available in the following 5 colours: champagne - light green - black - indigo blue - white. Luxury have as additional a soft close wooden seat with stainless steel hinges included. Connection 19 mm inlet, 38 and 25 mm outlet.



Laguna electric silent
CD:6600000912 12V.
CD:6600000924 24V

Laguna electric standard
CD:6500000912 12V
CD:6500000924 24V

Luxury STD "soft close" seat.
CD:6500002212 12 V.
CD:6500002224 24 V.

Luxury low "soft close" seat.
CD:6500002012
CD:6500002024



Deluxe low silent
CD:6500003012 12v.
CD:6500003024 24v.

Deluxe low bev.silent
CD:6500003112 12v.
CD:6500003124 24v.

Deluxe std. silent
CD:6500003212 12v.
CD:6500003224 24v.

Deluxe std. bev. silent
CD:6500003312 12v.
CD:6500003324 24v.



Deluxe low .electric
CD:6500003612 12v.
CD:6500003624 24v.

Deluxe low. bev.electric
CD:6500003712 12v.
CD:6500003724 24v.

Deluxe std. electric
CD:6500003812 12v.
CD:6500003824 24v.

Deluxe std. bev. electric
CD:6500003912 12v.
CD:6500003924 24v.



Marine Toilets:

Electric standard compact
CD:6500000712 12V 13A.
CD:6500000724 24v 7A.



Electric standard comfort
CD:6500000812 12V 13 A.
CD:6500000824 24V.7 A,



Manual Compact
CD:6600000700



Manual Comfort
CD:6600000800



Electric silent compact
CD:6600000712 12V.11 A.
CD:6600000724 24V. 6 A.



Electric silent comfort
CD:6600000812 12V. 11A.
CD:6600000824 24V. 6 A.



Conversion kits

Converts compact and comfort bowl of most toilets with 4 bolt fixing bowls and bolt centres on a 95 mm (3 3/4") diameter circle such as Matromarine, Jabsco TMC, Raritan, RM69, Johnson Pump, Thefford.
Included kit contains all necessary parts, such as stainless steel bolts and washers, hose and gaskets. and control panel in the electric version.

Manual
CD:6100000700



Electric
CD:5500000712 12V.
CD:5500000724 24V.



Accessories:

Vented loops:

CD:6000100015
CD:6000100013
CD:6000100010
Port Connection
38,25,19 mm



Y-valves:

Can be padlocked.
CD:6000100025
Port connection 38 mm.

CD:6000200025
extra 25 mm straight inlet port
and handle extension
Orientable port connection
38 mm,



Electrovalve:

CD:6500102012
CD:6500102024
Port Connection 1/2
mm hose



Flush Pump 9 LPM

CD:2500000912
CD:2500000924
Connection 1/2 mm
hose



Spare seats:

CD:6500000001 compact wooden
CD:6500000002 compact plastic
CD:6500000003 comfort wooden
CD:6500000006 deluxe with ss hinges
CD:6500000007 soft close for luxury

Bidet:

CD:6500000021 Bidet low bevelled
CD:6500000022 Bidet std.
CD:6500000023 Bidet std bevelled
Tap is not included.



Basin

CD:6500000556
Weight kg 3 drain 1 1/4" and 1 1/2"
Dimensions: 39x32,5x14 cm



Control panels

CD:6000000715 electric std.
CD:6500001702 electric std.with level indicator
CD:6500002003 electric silent with level indicator
CD:6500002002 electric silent Carling switch panel.
CD:4500000118 probes for level indicator



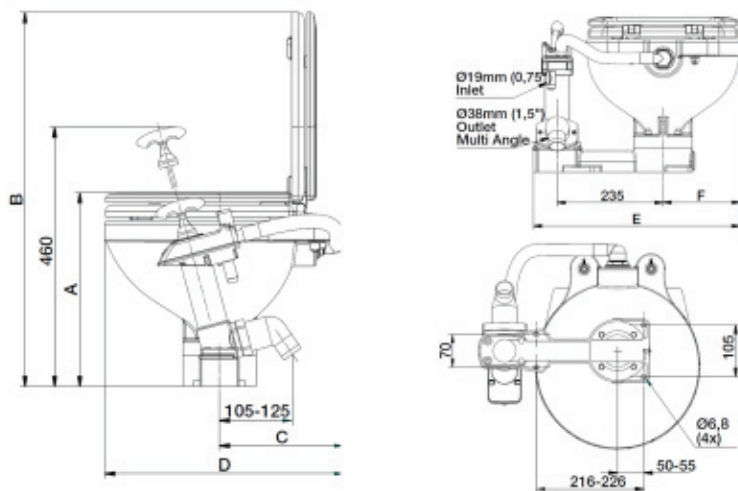
Bidet for marine toilets:

CD:6500000016 1 tap
CD:6500000017 2 taps
for compact,comfort,laguna models.
CD:6500000015 mixer tap.
for deluxe and luxury models.



Manual toilet:

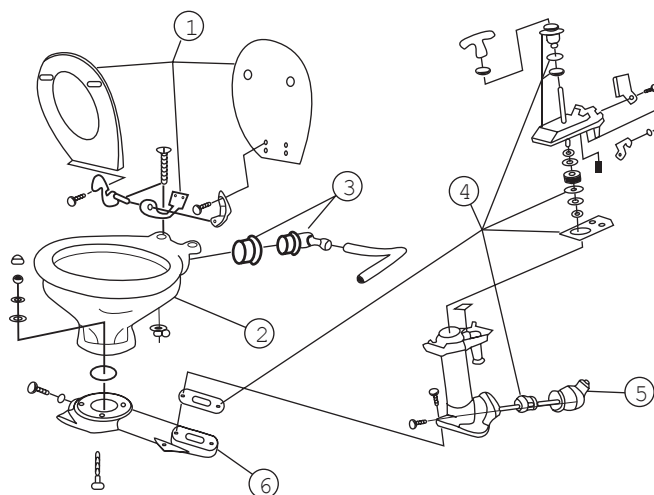
PART. N.	DESCRIPTION	WEIGHT	A	B	C	D	E	F
6600000700	COMPACT	9 KG	345	650	215	425	450	170
6600000800	COMFORT	10 KG	705	705	275	490	470	185



EXPLODED VIEW:

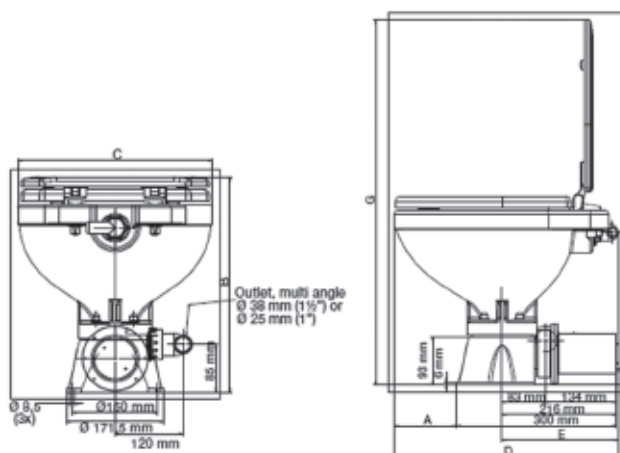
Art. 6500000001 white wooden seat (1)
 Art. 6500000500 compact bowl (2)
 Art. 6100000777 toilet base (6)
 Art. 6500011000 gasket kit (4)
 Art. 61000000700 conversion kit
 Art. 6000000706/7/11 outlet/flange elbow/gasket (5)

Art. 6500000003 comfort wooden seat (3)
 Art. 6500000510 comfort bowl (2)
 Art. 6500000550 intake elbow (3)
 Art. 6100000770 complete pump
 Art. 6000007011 bowl gasket/screws



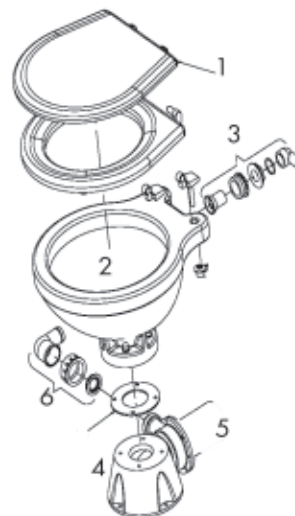
Electric silent toilet:

PART. N.	DESCRIPTION	WEIGHT	A	B	C	D	E	G
6600000712-24	COMPACT	10KG	120	390	335	420	215	700
6600000812-24	COMFORT	11 KG	190	385	365	490	470	755



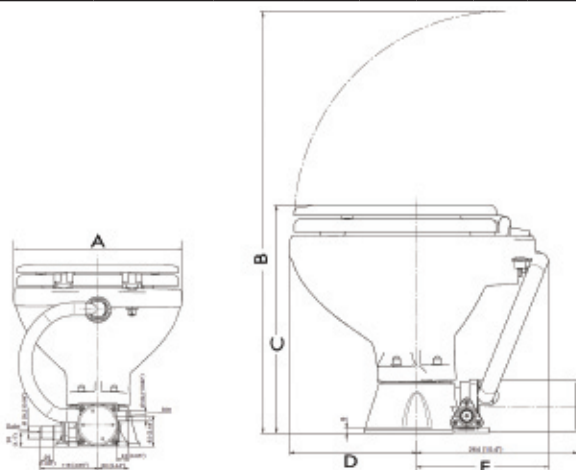
EXPLODED VIEW

- 1) 6500000001 wooden seat
6500000003 wooden seat large size
- 2) 6500000500 porcelain compact bowl
6500000510 porcelain comfort bowl
- 3) 6500000550 intake elbow
- 4) 5600000405 base group
- 5) 6000002112/24 motor group 12/24 V.
- 6) 5600000407 outlet elbow



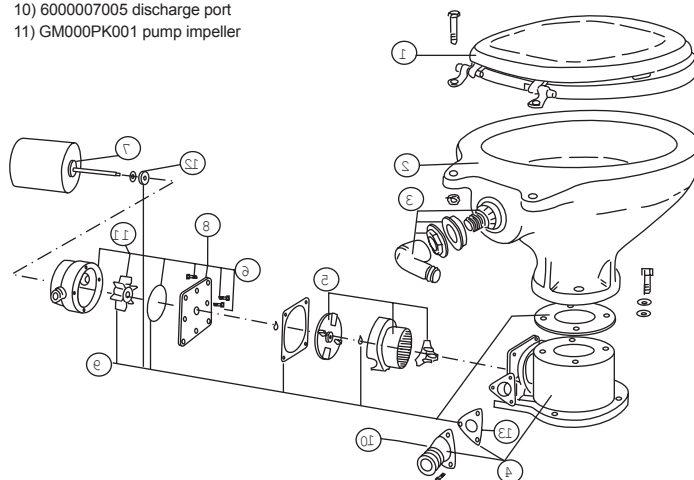
Electric standard toilet:

PART. N.	DESCRIPTION	WEIGHT	A	B	C	D	E
6500000712-24	COMPACT	10KG	345	692	373	209	216
6500000812-24	COMFORT	11 KG	366	747	380	220	275



EXPLODED VIEW

- 1) 6500000001 wooden seat
- 2) 6500000500 compact bowl
- 3) 6500000550 intake elbow
- 4) 6000007100 base
- 5) 6000007121 macerator group
- 6) 6000007112 pump group brass
- 7) 600000712/24 motor 12/24 v.
- 10) 6000007005 discharge port
- 11) GM000PK001 pump impeller

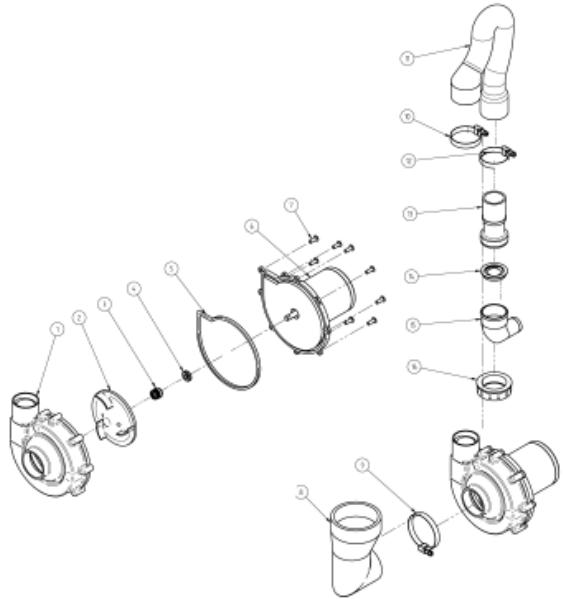
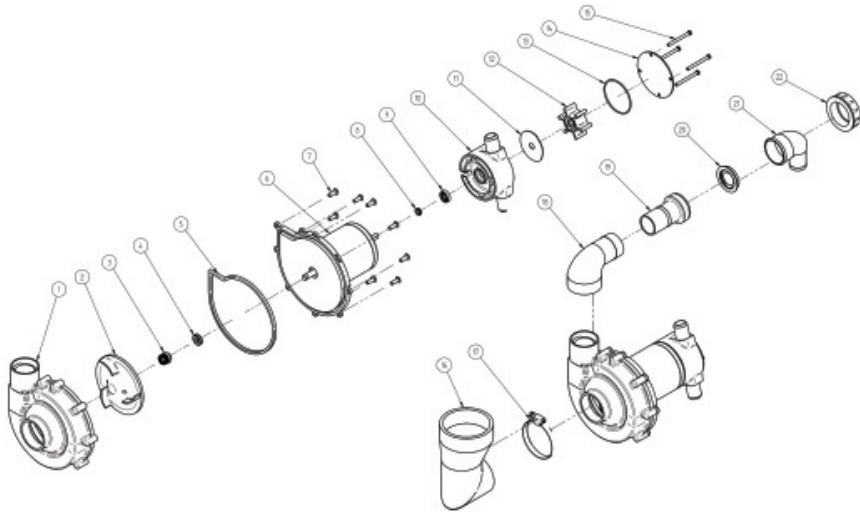


Laguna and Deluxe electric toilets

ITEM	DESCRIPTION	PART NUMBER	ITEM	DESCRIPTION	PART NUMBER	ITEM	DESCRIPTION	PART NUMBER	PART NUMBER				
1	PUMP BODY	5500019008	8	SEAL	CD.5500019010	16-17-18	HOSES/CLAMPS	CD.5500019005					
2	IMPELLER		9	LIPSEAL		19	CONNECTION						
3	MECHANICAL SEAL		10	PUMP BODY						20	CHECK VALVE		
4	MECHANICAL SEAL		11	WEAR PLATE								21	ELBOW
5	PACKING		12	RUBBER IMPELLER									
7	SCREW	13	O-RING										
6	MOTOR	14	COVER PLATE										
			15	SCREWS									

Laguna and Deluxe electric silent (hydrovacuum) toilets

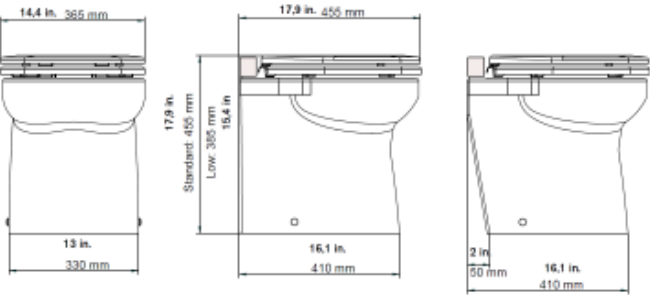
ITEM	DESCRIPTION	PART NUMBER	ITEM	DESCRIPTION	PART NUMBER	PART NUMBER
1	PUMP BODY	CD. 5500019008	8-11	HOSES	CD.5500019706	CD.5500019705
2	IMPELLER		9-10-12	CLAMP		PICTURE B PG 2
3-4-5	GASKETS/SEALS		13	CONNECTION		
7	SCREW		14	CHECK VALVE		
6	MOTOR	CD. 60000019012-24	15	ELBOW	CD.5500019706	CD.6500019805
			16	NUT		PICTURE A PG 2



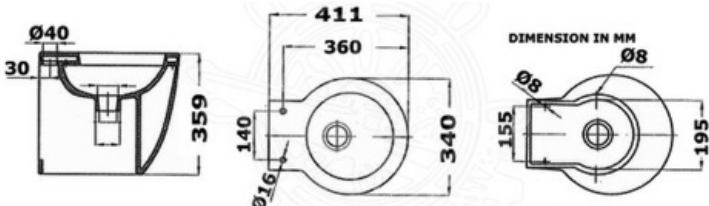
PART. N.	BOWL SIZE	BOWL TYPE	WEIGHT	SYSTEM TYPE
6500003012-24/6500003612-24	LOW	DELUXE	20KG	NEW 2012
6500003112-24/6500003712-24	LOW BEVELLED	DELUXE	21 KG	OLD>2011
6500003212-24/6500003812-24	STD	DELUXE	20KG	NEW 2012
6500003312-24/6500003912-24	STD BEVELLED	DELUXE	21 KG	OLD>2011
6500002012-24/6500002412-24	LOW	LUXURY	20KG	NEW 2012
6500002112-24/6500002512-24	LOW BEVELLED	LUXURY	21 KG	OLD>2011
6500002212-24/6500002612-24	STD	LUXURY	20KG	NEW 2012
6500002312-24/6500002712-24	STD BEVELLED	LUXURY	21 KG	OLD>2011

PART. N.	BOWL TYPE	WEIGHT	SYSTEM TYPE
6500000912 / 6500000924	LAGUNA	20KG	ELECTRIC STD
6600000912 / 6600000924	LAGUNA	21 KG	ELECTRIC SILENT

Luxury and Deluxe models



Laguna model.



TOILET SINGLE SYSTEM

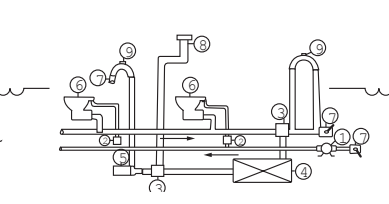
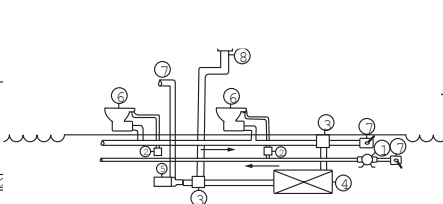
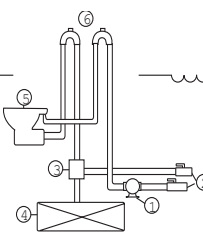
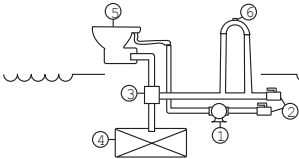
ABOVE THE WATERLINE

BELOW THE WATERLINE

TOILET CENTRALIZED SYSTEM

ABOVE THE WATERLINE

BELOW THE WATERLINE



Toilet single system
Above the waterline
Below the waterline
1 automatic pressure system
or deck pumps
2 seacock

3 y-valve
4 holding tank
5 toilets
6 vented loop 3/4 (19 mm.)
water inlet 1" 1/2 (38 mm.) discharge

Centralized system above the waterline
1 automatic pressure system or deck pumps
2 inlet electro valve
3 y-valve
4 holding tank
5 macerator pump
6 toilets
7 seacock
8 discharge to approved
disposal station

Centralized system below the waterline
1 automatic pressure system
or deck pumps
2 inlet electro valve
3 y-valve
4 holding tank
5 macerator pump
6 toilets
7 seacock
8 discharge to approved
disposal station
9 vented loop



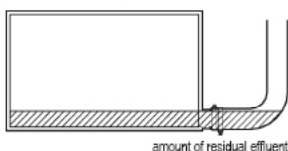


Waste Water Treatment:

New updated version of the waste water kit with the macerator pump mounted and already connected to the tank. The system includes tank, macerator, y-valve, gas tank vent, activated carbon filter and control panel with probe to check the level in the tank. Matromarine holding tank systems are molded from linear low density polyethylene (LLDP) resin. Polyethylene is best-suited for holding tank constructions because of its resistance to corrosion and odor permeation, and it will last longer than the life of a typical fiberglass hull. ISO/USCG compliance: MATROMARINE models are fully compliant with the ISO 8099:2000(E) Standards. Odour-free design: MATROMARINE tanks have extra-heavy wall thickness to prevent odour permeation. Tanks can be fitted with an activated carbon filter that stops unpleasant odours from escaping through the holding tank vent. Multiple tank outlets: most Matromarine models are equipped with two discharge outlets: one is for connection to a deckmounted discharge fitting and the other is for connection to an overboard discharge pump. Leak-proof design: Matromarine one-hose connection is located on top of the tank, thus eliminating all possibility of leakage due to a faulty connection below the liquid level of the tank contents. Our unique diptube design reduces the risk of clogging while keeping the residual contents in the tank to a minimum. New fast connection in strong PVC makes this kit the most easy-mounting and complete system for the treatment of waste waters present on the market. Available also in 24V. version upon request.

- CD. 9400000547 Kit for waste water (rectangular) 47 lt.
- CD. 9300000550 Kit for waste water (rounded shape) 50 lt.
- CD. 9400000578 Kit for waste water (rectangular) 78 lt.
- CD. 9300000575 Kit for waste water (rounded shape) 75 lt.
- CD. 94000005112 Kit for waste water (rectangular) 112 lt
- CD. 9300000598 Kit for waste water (rounded shape) 98 lt.

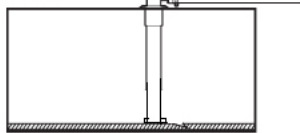
Typical Discharge outlet



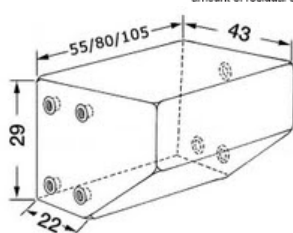
amount of residual effluent



Matromarine Discharge outlet



amount of residual effluent



POLYTHENE WASTE TANKS

Complete with 4 dead female unions 3/4" dim. 19/20 mm. and 4 dead female unions 1 1/2" dim 38/40 mm. for rubber gasket.

CD. 9100000547	47 lt. 480 x 400 x 250 mm - rectangular
CD. 9100000578	78 lt. 700 x 400 x 300 mm - rectangular
CD. 9100005112	112 lt. 700 x 800 x 200 mm - rectangular
CD. 9000000550	50 lt. 430 x 550 x 290 mm - rounded shape
CD. 9000000575	75 lt. 430 x 800 x 290 mm - rounded shape
CD. 9000000598	98 lt. 430 x 1050 x 290 mm - rounded shape



MACERATOR PUMP

Plastic macerator and rubber impeller discharge pump
 - self priming up to 2 mt. vertical lift.
 - 43 LPM output at 4 mt. total head
 - macerates and discharges water and waste mixtures.



ACTIVE CARBON FILTER

Complete filter with 3/4" AND 3/8" nipples, Manufactured in light alloy and nylon this filter must be installed in the highest possible location along the breather of the tank.

CD. 900000600



LEVEL INDICATOR:

Probes holder with 5 bushes in which there are 3 stainless steel probes for waste water mixture tank units. Plastic bushes 20 mm long, to avoid risk of short circuit due to the humidity inside the tank. A panel with a scale of 3 leds is advising the almost full tank with a buzzer. Both holders and panels have VDO connections.

CD. 4500000140 LEVEL INDICATOR AND PROBE
 CD. 4500000118 PROBE



MAXI MACERATOR PUMP

Toilet waste macerator pump, 47 min. rated, can discharge tanks up to 2100 litres.
 Bronze pump body self priming up to 6 mt. vertical lift.



PART. N.	VOLT	AMP	FLOW/MIN	FLOW 3MT/MIN	HOSE CONNECTION IN/OUT	DIMENSIONS
5500001112	12	12	43	23	38/25 MM.	240X130X90mm
5500001124	24	7	43	23	38/25 MM.	240x130X90mm
5500001012	12	16	47	33	38/25 MM.	260x140x105mm
5500001024	24	9	47	33	38/25 MM.	260x140x105mm

GREY & BLACK DIAPHRAGM WATER PUMPS:



- Compact and simple design
- Flexible installation
- No filter required
- Can run dry.
- Can pump air/water mixture
- Low power consumption
- Quiet operation
- Meets ISO 8846 EN55014 Standards
- 360° rotational pump body and 360° rotational hose connection
- Double non-return valve.

A modern diaphragm pump that can be set up in several applications and with different pump motor configurations. It is easy to install as a bilge pump in any leisure craft or anywhere after the drain outlet in the waste water system or directly in the Matromarine waste water tank. No filters required, the pump can run dry, and also can handle a mixture of air and water without difficulty. Perfect for installation in tight spaces, the Laguna shower drain pump can be incorporated into a small boat bilge space. Available in version with double 19 mm port connection and 38 mm port connection. Equipped with straight and 360° angled rotational port connection.

PART. N.	VOLT	AMP	FLOW/MIN	FLOW 1,5 MT/MIN	HOSE CONNECTION	DIMENSIONS
8700101112	12	9	22	18	19 (GREY)	141x140x105mm
8700101124	24	3	22	18	19 (GREY)	141x140x105mm
8700001112	12	8	32	26	38 (WASTE)	151x140x105mm
8700001124	24	3	32	26	38 (WASTE)	151x140x105mm





Marine Pumps for Deckwash, Bilge & Refuelling

A wide range of marine pumps suitable for all applications. Capacities vary from 4LPM TO 140 LPM, allowing the proper matching of the pump to the desired use. All fitted with heavy-duty motors to provide long service life under heavy use. Our series of marine pumps are employed for bilge pumping systems, wash down applications, deck wash, refuelling and waste water handling. Certified ISO 8846 - EN 55014

A. DECK PUMP: Ideal for deck washing, bilge pumping and pressurized systems. Manufactured in brass. Self priming up to 3/5 mt. vertical lift. Port connection 1/2". 19 mm. Dimensions 160x120x80 mm. and 180x120x80 mm.

B. GEAR AND OIL CHANGER PUMP: Discontinuous and continuous duty gear pump, run dry and self priming. Port connection 14mm or 14 Out 8 In. Included gear pump 180 cm long wire clamps, fuse holder and hoses 8 and 6 mm. Manufactured in PTFE. Can run dry. Patented.

C. DIAPHRAGM PUMP: A wide choice of silent pumps with 3 diaphragms, 18 litres per minute. Connection 1/2" id hose

D. CIRCULATION PUMP: A modern circulation pump with a motor designed for continuous operations. Suitable for fresh water and ethylene glycol circulation. Equipped with a carbon /ceramic/viton/sus316 mechanical seal. Port connection 38 mm. 1 1/2"

A

Delivery: 33 LPM
(BRASS PUMP B.)
CD. 8500000112 12 V. 7A.
CD. 8500000124 24 V. 4A.
Delivery: 45 LPM
(BRASS PUMP B.)
CD. 8500000212 12 V. 12A.
CD. 8500000224 24 V. 6A.

Economy version
Delivery 33 LPM
CD. 8500001112 12 V. 12A.
CD. 8500001124 24 V. 6 A.



B

Delivery: 8 litres
CD. 8500000312 12V. 4A.
CD. 8500000324 24 V 2A.
CD. 8500010312 12V.4A
CD. 8500010324 24V.2A

Continuous duty:
Delivery 12 litres
CD. 8500000512 12V. 6A.
CD. 8500000524 24 V 3A.
CD. 8500010512 12V.6A.
CD. 8500010524 24V.3A.

Hoses kit 6/8mm. CD 8500000310



C

Delivery: 18 LPM
CD. 8500101812 12V. 6 A.
CD. 8500101824 24V. 3 A



D

CD.5000000152 12 V 5 A. 115 LPM
CD.5000000154 24 V. 2,5 A. 115 LPM



AUTOMATIC BILGE PUMPS:

Laguna bilge pumps are equipped with a built-in electric controlled snap switch technology making it fully automatic. No float switch needed and no power used until pump turns on when water level rises. These pumps are durable and easy to install, and they offer boaters a sleek new design that has been tested to be reliable, efficient, and automatic operative in harsh saltwater and freshwater uses. Equipped with stainless steel shaft 316, and high-impact durable plastic housing.



- *Compact, all-in-one unit
- *Snap sensing switch integrated into the pump body
- *No mercury
- *Removable clip on basket design
- *3-wire device can be run in auto or manual override mode.
- *No tools needed for maintenance
- *Extremely energy efficient
- *Water-cooled motor for long service intervals
- *Meets the international standard, ISO 8846 marine

PART. N.	MOD.	VOLT	AMP	FLOW/MIN	FLOW 1 MT/ MIN	HOSE CONNECTION	DIMENSION
5700205115	500 GPH	12	1,8	32	25	19	151x78x95 mm
5700205133	750 GPH	12	3	50	42	19	151x78x95 mm
5700205134	750 GPH	24	2	50	42	19	151x78x95 mm
5700205021	1100 GPH	12	4	75	65	29	151x78x95 mm
5700205022	1100 GPH	24	2,5	75	65	29	151x78x95 mm

BILGE PUMPS:

Submersible bilge pumps. These pumps are durable and easy to install, and they offer boaters a sleek design that has been tested to be reliable and efficient, in harsh saltwater and freshwater uses. Equipped with stainless steel shaft 316, and high-impact durable plastic housing. Easy to install and to clean.



PART. N.	MOD.	VOLT	AMP	FLOW/MIN	FLOW 1 MT/ MIN	HOSE CONNECTION	DIMENSION
5700000115	300 GPH	12	1,8	27	22	19	75x93 mm
5700000133	750 GPH	12	3	50	40	19	75x105 mm
5700000134	750 GPH	24	2	50	40	19	75x105 mm
5700000021	1100 GPH	12	4	75	65	29	120x145 mm
5700000022	1100 GPH	24	2,5	75	65	29	120x145 mm
5500000152	2100 GPH	12	8	140	120	38	120x165 mm
5500000154	2100 GPH	24	4,5	140	120	38	120x165 mm

AUTOMATIC SWITCHES:



New mercury free switch with "SNAP" movement with over 500.000 on/off.
2 years of warranty. ISO 8846

CD:8500000108 15 Amp.
CD:8500000109 15 Amp. with integral protection

New mercury free switch with movements in stainless steel
2 years of warranty. ISO 8846

CD:8500000105 15 Amp.
CD:8500000106 20 Amp.

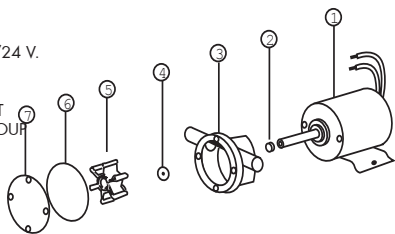


DECK PUMP

EXPLODED VIEW.

SPARE PART LIST:

- 01) 6000000112/24 MOTOR 12/24 V.
04) 6000001501 SEAL
05) GM000MC001 IMPELLER
[2-4-5-6] 8500000111 SERVICE KIT
[3-4-5-6-7] 8500000100 PUMP GROUP

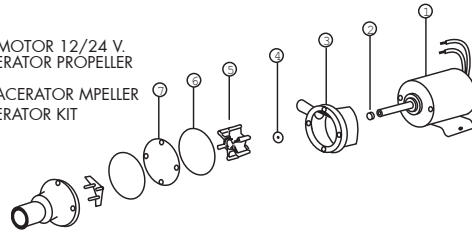


MACERATOR PUMP

EXPLODED VIEW.

SPARE PART LIST:

- 01) 6000000912/924 MOTOR 12/24 V.
08) PLO00MC002 MACERATOR PROPELLER
04) 6000001501 SEAL
05) GM000MC001 MACERATOR IMPELLER
5500000005 MACERATOR KIT
[2-4-5-6]



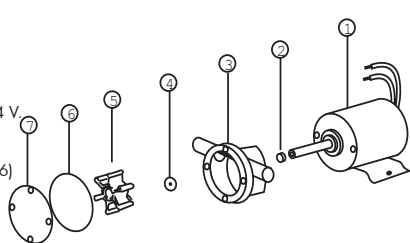
MAXI DECK PUMP

MAXI DECK PUMP:

EXPLODED VIEW.

SPARE PART LIST:

- 01) 6000000212/24 MOTOR 12/24 V.
04) 6000001501 SEAL
05) GM000MC001 IMPELLER
8500000111 SERVICE KIT [2-4-5-6]
8500000100 PUMP GROUP
[3-4-5-6-7]

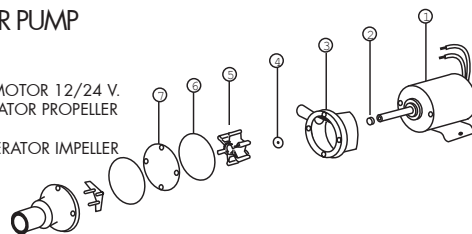


MAXI MACERATOR PUMP

EXPLODED VIEW.

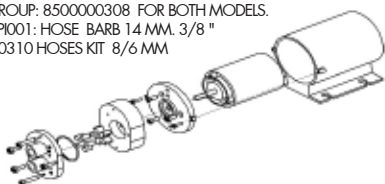
SPARE PART LIST:

- 01) 6000001012/1024 MOTOR 12/24 V.
08) PLO00MC002 MACERATOR PROPELLER
04) 6000001501 SEAL
05) GM000MC001 MACERATOR IMPELLER
5500000005
MACERATOR KIT
[2-4-5-6]



GEAR PUMP

- MOTOR GROUP: 6000000312 8 LPM 12 V
MOTOR GROUP: 6000000324 8 LPM 24 V
MOTOR GROUP 6000000512 12 LPM 12V.
MOTOR GROUP 6000000512 12 LPM 24V.
PUMP GROUP: 8500000308 FOR BOTH MODELS.
MN000P001: HOSE BARB 14 MM. 3/8"
8500000310 HOSES KIT 8/6 MM

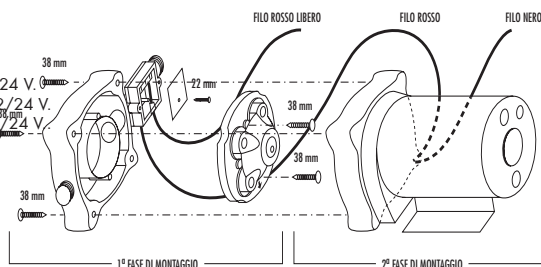


FLOWING BLUE PUMP

EXPLODED VIEW.

SPARE PART LIST:

- 01) 2600010912-24 9 LITRES MOTOR 12/24 V.
02) 2600101212 -24 12 LITRES MOTOR 12/24 V.
03) 2600101812-24 18 LITRES MOTOR 12/24 V.
04) 2600010901 9 LITRES PUMP GROUP
05) 2600101201 12 LITRES PUMP GROUP
06) 2600101801 18 LITRES PUMP GROUP

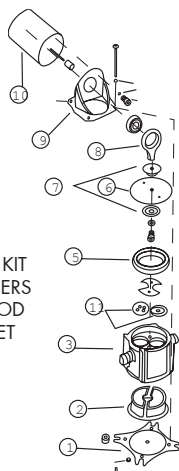


DIAPHRAGM PUMP

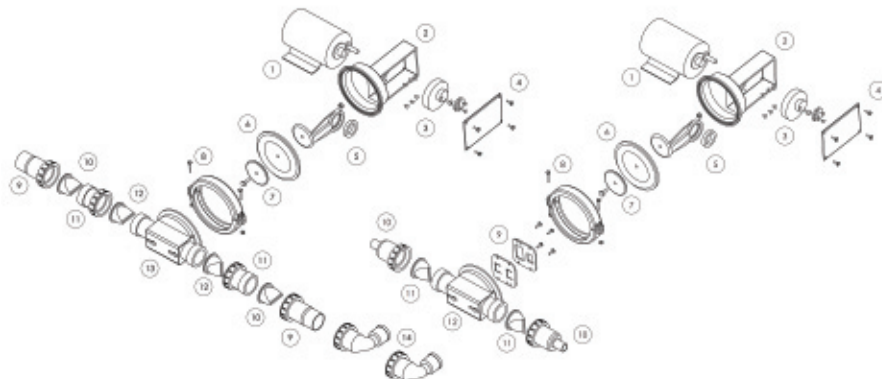
EXPLODED VIEW.

SPARE PART LIST:

- 1) PLO00PM005 BOTTOM PLATE
2) GM000PM004 PULSATION DAMPENER
3) PLO00PM001 PUMP BODY
5) PLO00PM002 RETAINER
6) GM000PM001 DIAPHRAGM
[6-7-11-12] 8500001800 SERVICE KIT
7) TC000PM003 DRAWN WASHERS
8) 85000001808 CONNECTING ROD
9) PLO00PM006 MOTOR BRACKET
10) 60000001812/24 MOTOR 12/24 V.
11) 85000001801 VALVE SET



WASTE AND GREY WATER PUMPS



WASTE

EXPLODED VIEW / SPARE PART LIST:

- 01) 6000108712-24 35 LITRES MOTOR 12/24 V.
05)-07) 87000001105 PISTON ROD. FOR BOTH VERSIONS.
06)-10)-12) 87000001106 GASKET KIT
08) 87000001108 FIXING CLAMPS FOR BOTH VERSION.
09)-10)-11)-12)-13)-14) 87000001110 WASTE PUMP GROUP

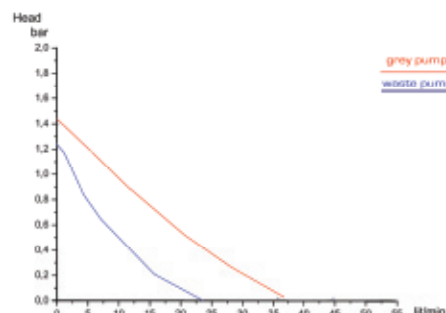
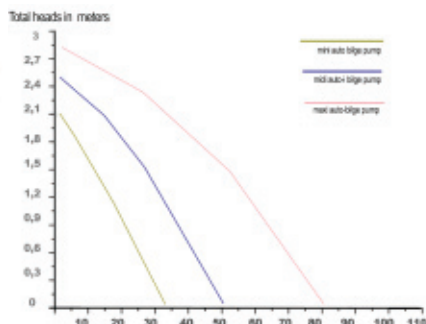
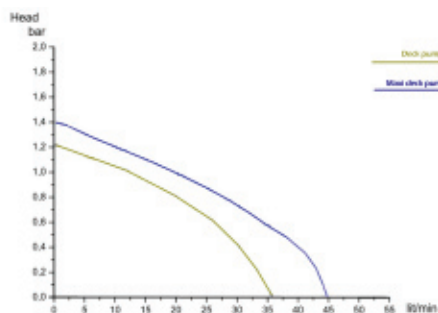
GREY

- 01) 6000108512-24 22 LITRES MOTOR 12/24 V.
05)-07) 87000001105 PISTON ROD. FOR BOTH VERSIONS.
06)-9)-11) 8700101106 GASKET KIT
10)-11)-12) 8700101110 GREY PUMP GROUP

IMPELLER PUMPS

SUBMERSIBLE BILGE PUMPS

GREY /WASTE WATER PUMP



Ocean Marine Horns

A wide range of marine electromagnetic horns for pleasure boats. Casing in strong ABS material particularly suitable to roll bar installation. Easy to be mounted. Corrosion-resistant. Tested at 50.000 cycles (1" on-4" off) Type approval 70/388 EEC. Supplied with stainless steel fixed plate. Available flush mounting horn to be installed on deck. Fully watertight.



PART. N.	COLOUR AND MATERIAL	TYPE	VOLT	AMP	DB AT 2 MT.	DISTANCE MT	HZ	DIMENSION L X W X H
7500000500	WHITE ABS/ ZINC .IRIDE	SUPPORT	12	4,5	110	1000	420	150x100x70 mm
7500000501	WHITE-CHROMED ABS./ZINC IRIDE	SUPPORT	12	4,5	110	1000	420	150x100x70 mm
7500000505	BLACK ABS /ZINC IRIDE	SUPPORT	12	4,5	110	1000	420	150x100x70 mm
7500000510	BLACK CHROMED/ZINC IRIDE	SUPPORT	12	4,5	110	1000	420	150x100x70 mm
7500000512	WHITE ABS/ZINC IRIDE	FLUSH MOUNT	12	1,1	109	1000	340	125X66X80 mm
7500000542	CHROMED ABS/STAINLESS STEEL	SUPPORT	12	5	109	1000	410	103x86x112 mm
7500000544	CHROMED ABS/STAINLESS STEEL	SUPPORT	24	3	109	1000	410	103x86x112 mm

BATTERY SWITCH

By this heavy-duty battery switch you can switch over, even with working engine, from battery NO 1 to battery NO 2 (or both batteries) without running the risk of damaging the diodes or alternator regulators.

Capacity: 6V. – 12V. – 32V.– Continuous 250 Amp.

– Interval 300 A.

Only non corrosive materials employed.

CD. 7500000600

DIMENSIONS: diameter 145 x 67 mm



FOOT SWITCH

Waterproof and suitable to any type of solenoid, universal 12 or 24 Volt.

Available in 2 different colours: black-white

CD. 4500000002 Down

CD. 4500000003 Up

DIMENSIONS : diameter 73 x 13 mm



POWER TRIM

It handles of a new concept of trim tab system, consisting of a revolutionary electro-mechanical movement.

It is powerful, precise, trouble- free, and, contrarily to the hydraulic mode, it doesn't need a maintenance service or an expensive installation.

Shaft made of stainless steel and nylon glass fiber. Body without any hydraulic tube.

TRIM TABS

Designed to improve the boat performance, these trim tabs reduce fuel consumption and improve stability in trimming the boats. Manufactured in 304 stainless steel, they are easy to fit and to adjust, and can be mounted on different sizes of boats, according to the engine power.

Equipped with stainless steel hinge swivel. Possibility of turning at 180 without problems

CD 3000000812 CYLINDER 12 V.

CD 3000000824 CYLINDER 24 V.

CD 3000000912 CYLINDER PAIR 12 V.

CD 3000000924 CYLINDER PAIR 24 V.

CD 3100000912 ELECTRIM 9 x 12"

CD 3000000916 ELECTRIM 9 x 16"

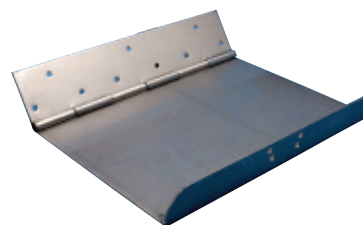
CD 3000000922 ELECTRIM 9 x 22"

CD 3000000911 CONTROL TRIM

Amp draw:

5.5 A. at 12 V.

2.5 A. at 24 V.





Ocean Marine Searchlight

Our range of marine lights are designed to withstand the rigors of sea-life. We engineer each product to match exact performance specification listings for an extra margin of safety. Our spotlights are designed to offer the best combination of beam spread (width) and intensity (length). Remote control and 4 mt extension lead are included, Spare extension lead and double station control panel upon request.

Xenon Spotlight: new powerful searchlight with improved style and performances, ideal for medium and big-sized yachts. Sealed beam xenon light with HID group. 55 watt power complete of water-proof remote control panel. Body and base in sun-ray white ABS (UVA). Excellent corrosion-resistance also in case of adverse weather conditions. Brighter, wider beam pattern for maximum viewing safety. Equipped with bright light and high powered 55 watt xenon light bulb 8000k. 2000 hours lifetime. 7" dia. bulb 156 mm. Creates a 30 degree wider beam pattern and delivers 5 times more light on sea than a standard halogen light. Meets or exceeds original equipment quality standards. Dual station remote control upon request.

Double spotlight: Two sealed beams 5" with halogen lamp h4 on each light allow to enjoy always of a very luminous ray, both if the light shaft is directed upwards and also when it is oriented down. Easy mounting thanks to the fitted fast connections. Complete of water-proof remote control and quick lead.

Single spotlight: Same as the previous version but with a single h4 lamp 6" 146 mm. Complete of water-proof remote control and quick lead. Upon request the spotlight can be supplied with an extension lead (4 mt. long). Spotlight body and base are made of sun-ray proof white ASA material. Available also with manual handle rotation 340°, Same characteristics of the electrical single version.

Flood Light: Manufactured in stainless steel. Sealed beam bulb. Diameter 115 mm. 5"



PART. N.	MOD.	VOLT	AMP	CANDLEPOWER	RANGE AT 1 LUX	SPARE BULB	REMOTE CONTROL	DOUBLE STATION
7000000001	manual 55 W.	12	5	100000	262 meters	7000001012	NO	
7000000002	manual 55 W.	24	3	100000	262 meters	7000001024	NO	
7000000012	electric 55 W.	12	6	100000	262 meters	7000001012	7000000112	7100000112
7000000024	electric 55 W.	24	4	100000	262 meters	7000001024	7000000124	7100000124
7100000012	electric 2X55W.	12	9	200000	262 meters	7100001312	7000000112	7100000112
7100000024	electric 2X55W.	24	6,5	200000	262 meters	7100001324	7000000124	7100000124
7200100012	xenon 55 W.	12	6	600000	800 meters	7200101012	7200000112	7200100112
7200100024	xenon 55 W.	24	3,5	600000	800 meters	7200101024	7200000124	7200100124
7000000003	floodlight 55 W	12	3	100000	262 meters	NO		
7000000004	floodlight 55 W.	24	1,5	100000	262 meters	NO		

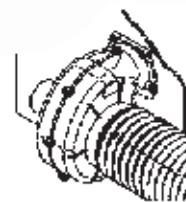


Ocean Marine Blowers

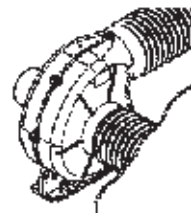
We manufacture a wide selection of marine blowers in strong nylon material homologated by R.I.N.A. and with different capacity from 280 m³ to 1000 m³ per hour. Screws and shaft in stainless steel.

Flex mount and very strong dynamic flange mount. Low current draw. Continuous duty. Best ratio on the market between volume air flow and compact size. All models are ignition protected ISO 8846. Complying with ISO 8849, EN 55014, ISO 10133.

Flange Mount



Flex Mount



FLANGE MOUNT:

CAPACITY: 280 mc. per hour / 163 cfm [CD. 5500001212 12 V. Amp 3,9](#)
 DIMENSIONS: 200 x 165 x 195 mm [CD. 5500001224 24 V. Amp 2,5](#)
 PORT CONNECTIONS: Inlet: 75 mm - Outlet: 72 mm

CAPACITY: 550 m³ per hour / 324 cfm [CD. 5500101212 12 V. Amp 12](#)
 DIMENSIONS: 290 x 257 x 150 mm [CD. 5500101224 24 V. Amp 6](#)
 PORT CONNECTIONS: Inlet: 110 mm - Outlet: 103 mm

CAPACITY: 750 m³ per hour / 441 cfm [CD. 5500101412 12 V. Amp 14](#)
 DIMENSIONS: 290 x 257 x 150 mm [CD. 5500101424 24 V. Amp 7](#)
 PORT CONNECTIONS: Inlet: 150 mm - Outlet: 103 mm

CAPACITY: 1000 m³ per hour / 589 cfm [CD. 5500101624 24 V. Amp 16](#)
 DIMENSIONS: 290 x 257 x 180 mm
 PORT CONNECTIONS: Inlet: 150 mm - Outlet: 103 mm

FLEX MOUNT:

CAPACITY: 550 m³ per hour / 324 cfm [CD. 5500102212 12 V. Amp 12](#)
 DIMENSIONS: 290 x 257 x 150 mm [CD. 5500102224 24 V. Amp 6,0](#)
 PORT CONNECTIONS: Inlet: 110 mm - Outlet: 103 mm

CAPACITY: 750 m³ per hour / 441 cfm [CD. 5500102412 12 V. Amp 14](#)
 DIMENSIONS: 290 x 257 x 150 mm [CD. 5500102424 24 V. Amp 7](#)
 PORT CONNECTIONS: Inlet: 150 mm - Outlet: 103 mm

CAPACITY: 1000 m³ per hour / 589 cfm [CD. 5500102624 24 V. Amp 16](#)
 DIMENSIONS: 290 x 257 x 180 mm
 PORT CONNECTIONS: Inlet: 150 mm - Outlet: 103 mm



1000 MC/H FLEX



1000 MC/H FLANGE



750 MC/H FLANGE



280 MC/H FLANGE



INLINE SERIES:

A modern range of inline blower utilizing advanced fan blade design technologies suitable for bulkhead mounting and for receiving 178 mm. diameter hoses. The first vane axial-flow bilge blowers designed using aerospace technology to maximize performance. No other bilge blowers in the industry provides such a powerful system output at such a low power input in a compact size. Stainless steel bracket to be required apart. Silent operation. For added durability, Matromarine incorporates an engineered plastic housing that withstands deformation during installation and prevents blade from housing interference. Comply with ISO 8846, EN 55014.

A

CAPACITY: 750mc. per hour / 441 cfm CD. 5500105012 12 V. Amp 3,9
DIMENSIONS: 200 x 165 x 195 mm CD. 5500105024 24 V. Amp 2,5
PORT CONNECTIONS: Inlet: 178 mm - Outlet: 175 mm

B

FLANGE VERSION:
CAPACITY: 750 m3 per hour / 441 cfm CD. 5500105512 12 V. Amp 11,5
DIMENSIONS: 250 x 220 x 150 mm CD. 5500105524 24 V. Amp 7.
PORT CONNECTIONS: Inlet: 178mm - Outlet: 178++mm
Upon request CONTINUOUS DUTY SERIES. (code change with 11 against 10 for all models continuous duty)

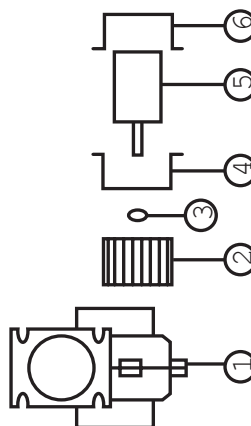
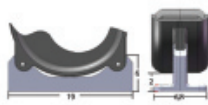
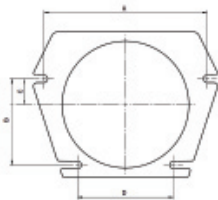
B

A



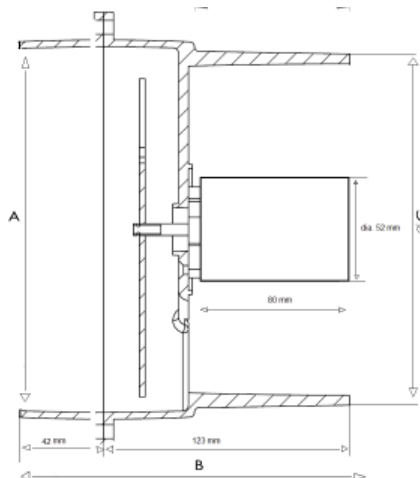
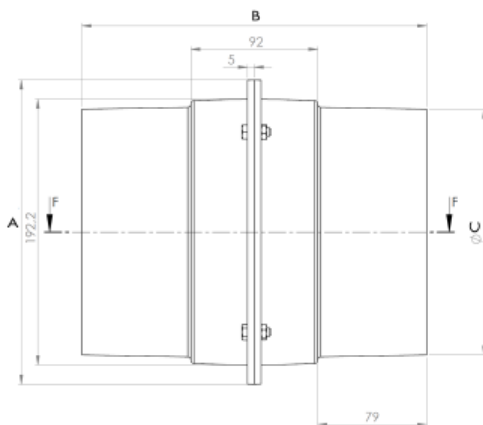
BLOWER

DESCRIPTION	MODEL	WEIGHT	A	B	C	D	DIM. IN MM. H.X.W.X.L.
BLOWER 280 MC/h	FLANGE	0,9 KG	82	56	25	65	200 X 165 X 190
BLOWER 550-750 MC/H	FLANGE/FLEX	2,2 KG	130	70	20	80	200 X 257 X 150
BLOWER 1000 MC/H	FLANGE/FLEX	2,8 KG	130	70	20	80	200 X 257 X 180



CENTRIFUGAL BLOWERS:
SPARE PARTS:

- 2) PL000BL004 Blower Fan 280 M3/H
 - 2) PL000BL012 Blower Fan (All Other Models)
 - 5) 6000001212-24 Motor Blower 12 V-24V 280 M3/H
 - 5) 6000101212-24 Motor Blower 12 V-24V- 550 M3/H
 - 5) 6000101412/ 24 Motor Blower 12 V.-24 V 750 M3/H
 - 5) 6000101624 Motor Blower 24 V 1000 M3/H
 - 12) PL000BL013 Plastic Flexmount bracket (Model< 550 M3/H)
- Spare: grid :
6000001215 Grate For 5500001212/24
PL000BL017 Grate 120X120 mm. for all the other models
10) PL000BL005 Reduction For 5500001212/24

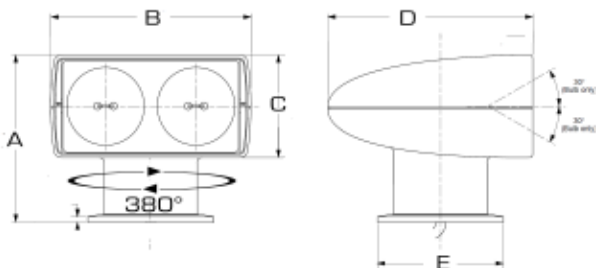


DESCRIPTION	WEIGHT	A	B	C
INLINE BLOWER 750 MC/H	1,6 KG	220	250	178
INLINE BLOWER 750CM/h FLANGE	1,1 KG	192	165	178

INLINE BLOWERS:
SPARE PARTS:

- 1) 6000001212 Motor Blower 12 V
- 6000001224 Motor Blower 24 V
- 2) PL00BL003 Blower Fan blade
- 3) PL00BL001 Blower housing
- 4) PL00BL002 Blower housing flange v.
- 5) TC000BL001 SS. Bracket. for models non flange mount.

SPOTLIGHTS



PART N.	DESCRIPTION	WEIGHT	A	B	C	D	E
7000000012-24	SINGLE	2 KG	220	160	146	220	120
7100000012-24	DOUBLE	2,2 KG	220	275	115	225	120
7200000012-24	2005	2,4 KG	130	260	156	200	143
7200100012-24	XENON	2,9 KG	320	260	156	350	143
70000000003-4	FLOODLIGHT	0,6	140	120	115	65	25

Dimension in mm. column "c" is the size of the spare headlight.

SPOTLIGHT.

SPARE PARTS:

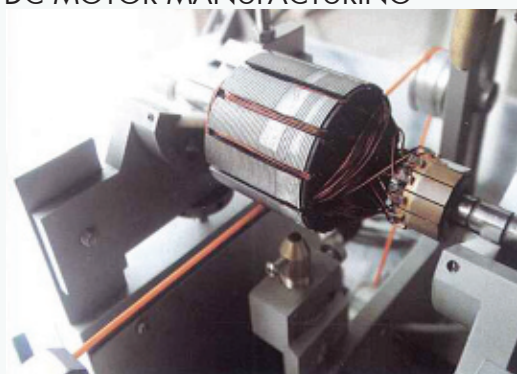
ME000FR010 QUICK EXTENSION LEAD 4 MT.
7000002008 BASE MOTOR GROUP
7000002009 BODY MOTOR GROUP



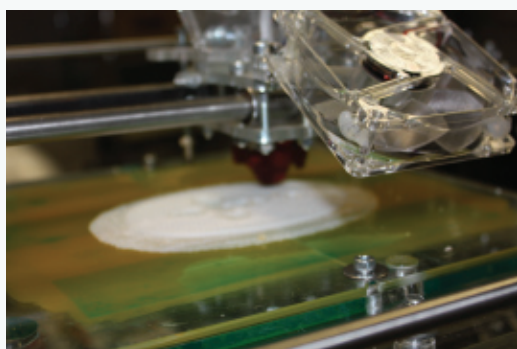
PREMIUM CERAMIC DESIGN
AND MANUFACTURING.



LATEST TECHNOLOGY IN
DC MOTOR MANUFACTURING



ENGINEERING & RAPID
PROTOTYPING:
INNOVATIVE R&D DEPT.



**MATROMARINE
PRODUCTS**

Discovery our range of products in the new website
WWW.MATROMARINE.COM

MATROMARINE PRODUCTS SRL
Via Sereghe' 1 16017
ISOLA DEL CANTONE
GENOVA ITALY
TEL.:+390109630004
FAX.:+390109630029
INFO@MATROMARINE.COM